

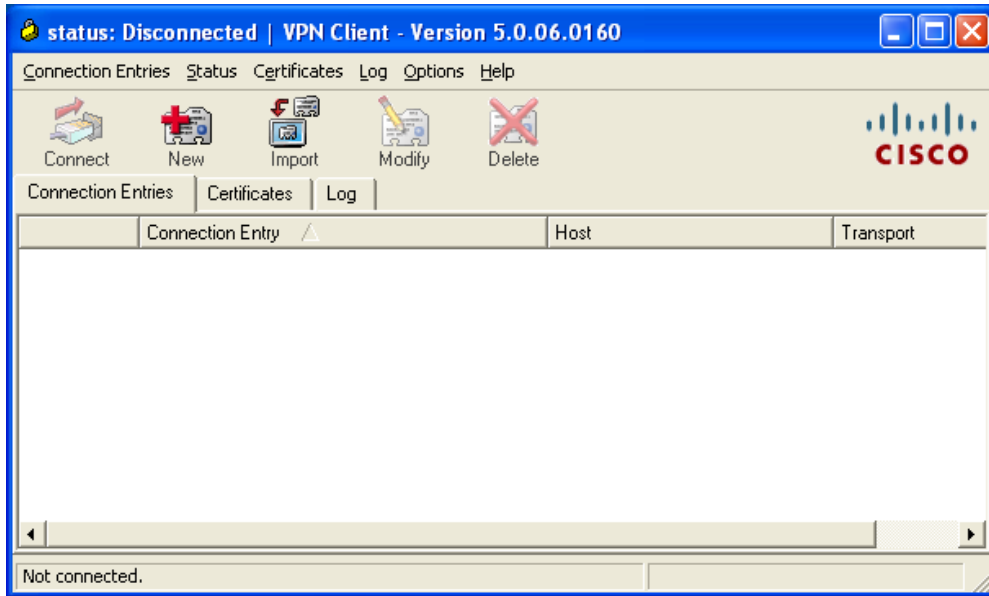


Configuring IPSec VPN

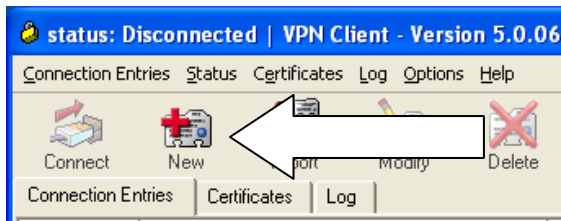
Updated: 26th Dec 2009

Note: The VPN client supports Windows XP, Vista, 7 (all 32bit only)

Upon installing the Cisco VPN client and rebooting, launch the VPN client. You should get this:



Create a new connection entry using "New".



Enter the following information. The connection entry can be anything and the rest of the info will be given on our website at the, "How to connect" page.

VPN Client | Create New VPN Connection Entry

Connection Entry:

Description:

Host:

Authentication | Transport | Backup Servers | Dial-Up

Group Authentication Mutual Group Authentication

Name:

Password:

Confirm Password:

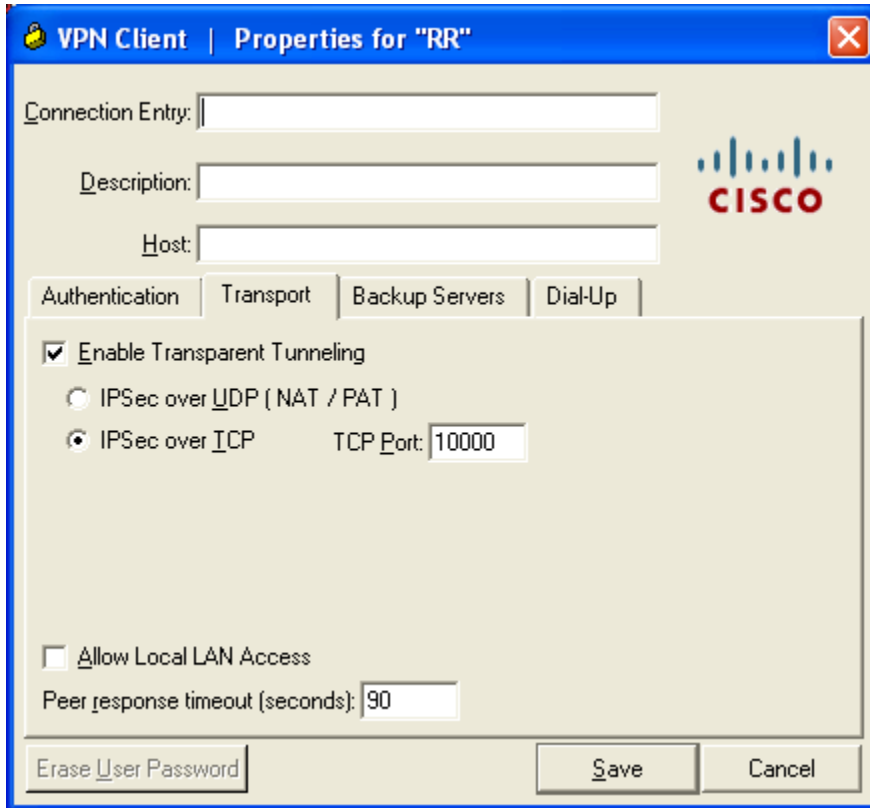
Certificate Authentication

Name:

Send CA Certificate Chain

Erase User Password | Save | Cancel

Enable IPsec over TCP under the "Transport" tab. Port is 10000.



Select the connection entry and click on connect.



Once you get the following screen, login with your username and password and you can start using the rack. You will get a route injection of 10.0.0.0/8, 177.1.0.0/16, 177.2.0.0/16 and 177.3.0.0/16.

