



Using Soft Phones

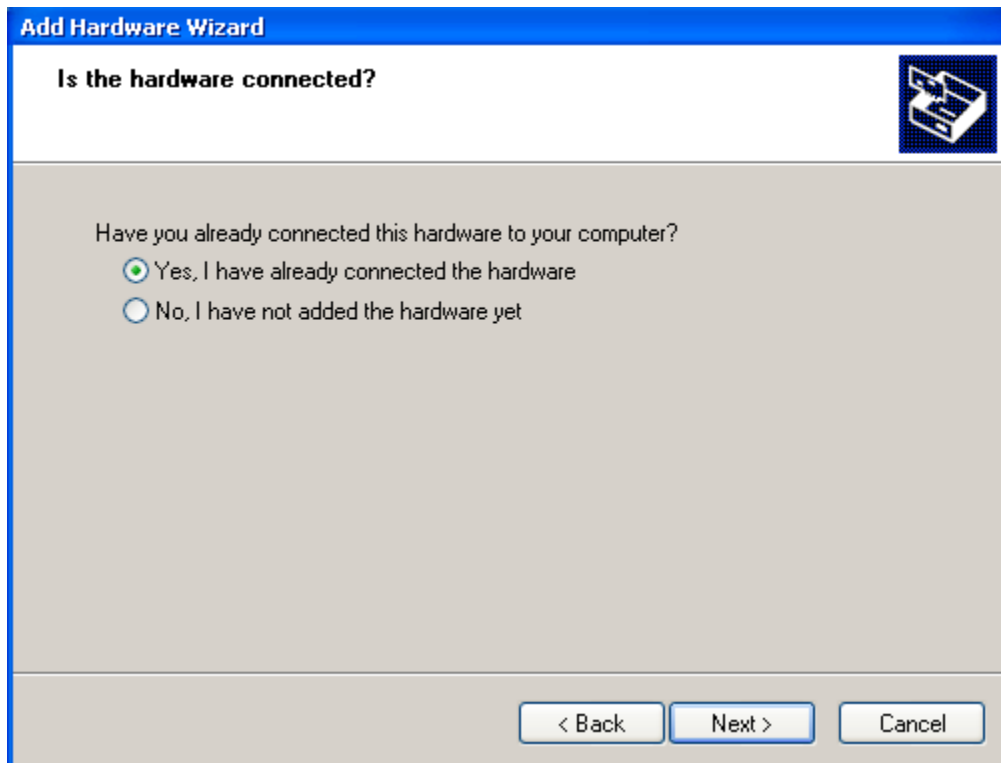
Updated: 3rd August 2010

First of all, we need to add loopback adapters to your system. This is needed so that the multiple soft phone clients on a single PC will be able to register with Communication Manager. IP addresses on the loopback adapters are not required and you can leave them to the default 169 IP range. Each Communication Manager or Communication Manager Express requires each phone to have a unique MAC address.

Shown below is the way to install loopback adapters on Windows XP and Vista.

Adding loopback adapters in Windows XP

Under control panel, go to “Add hardware” and follow the pictures below:



Add Hardware Wizard

The following hardware is already installed on your computer



From the list below, select an installed hardware device, then click Next to check properties or troubleshoot a problem you might be having.

To add hardware not shown in the list, click "Add a new hardware device."

Installed hardware:

-  Intel(R) 82371AB/EB PCI to USB Universal Host Controller
-  USB Root Hub
-  USB Root Hub
-  Generic USB Hub
-  USB Composite Device
- Add a new hardware device**

< Back

Next >

Cancel

Add Hardware Wizard

The wizard can help you install other hardware



The wizard can search for other hardware and automatically install it for you. Or, if you know exactly which hardware model you want to install, you can select it from a list.

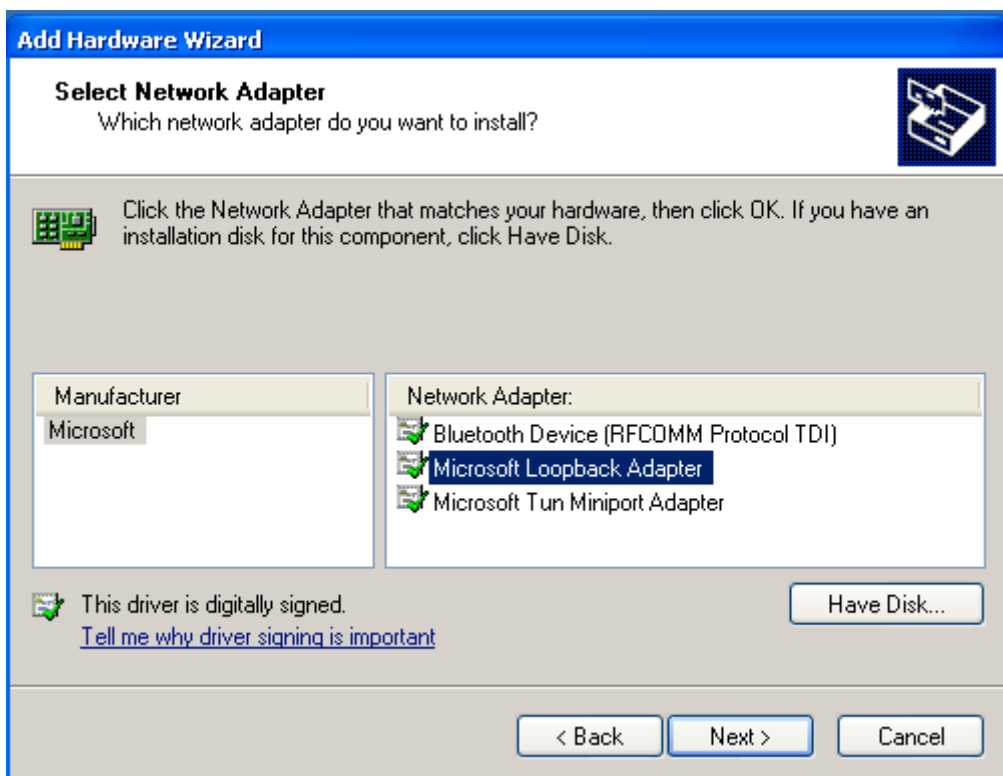
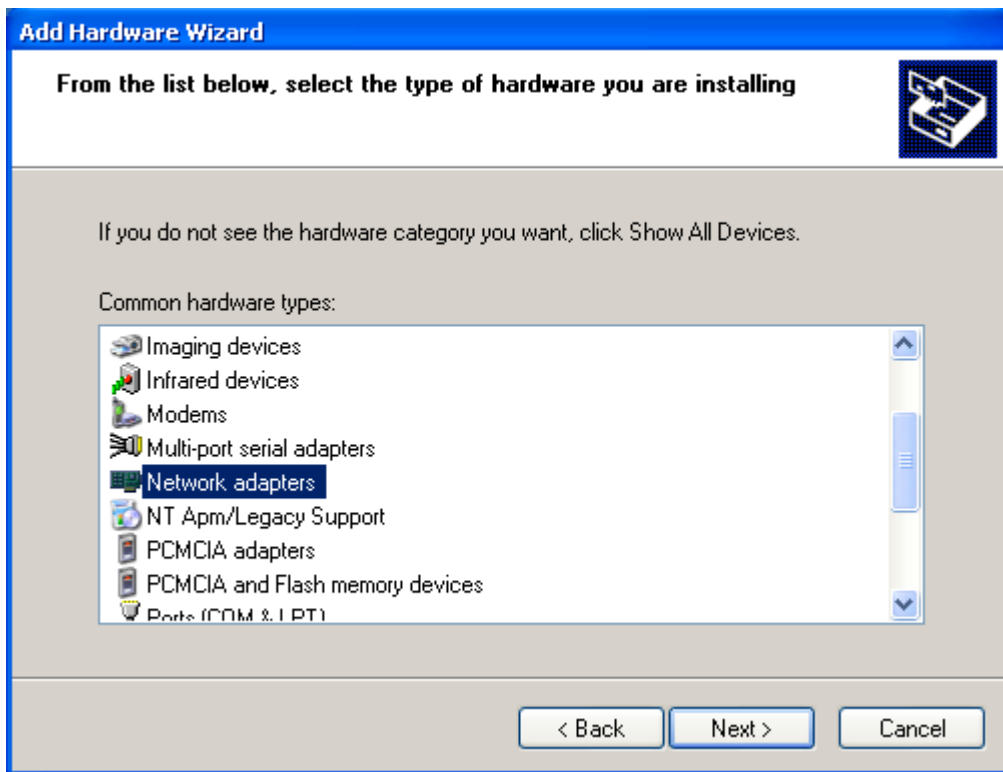
What do you want the wizard to do?

- Search for and install the hardware automatically (Recommended)
- Install the hardware that I manually select from a list (Advanced)

< Back

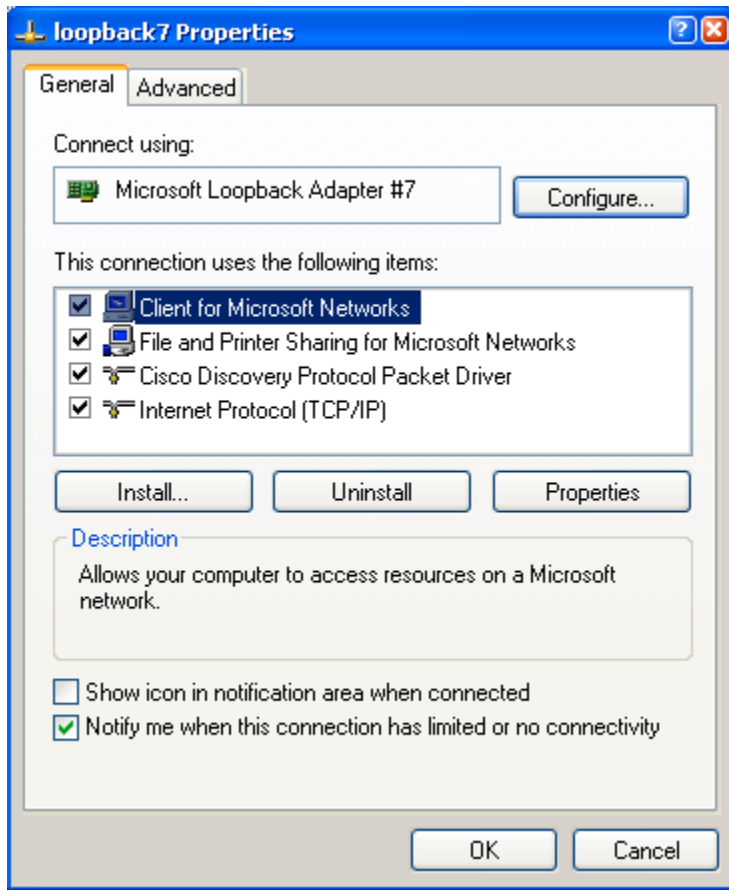
Next >

Cancel

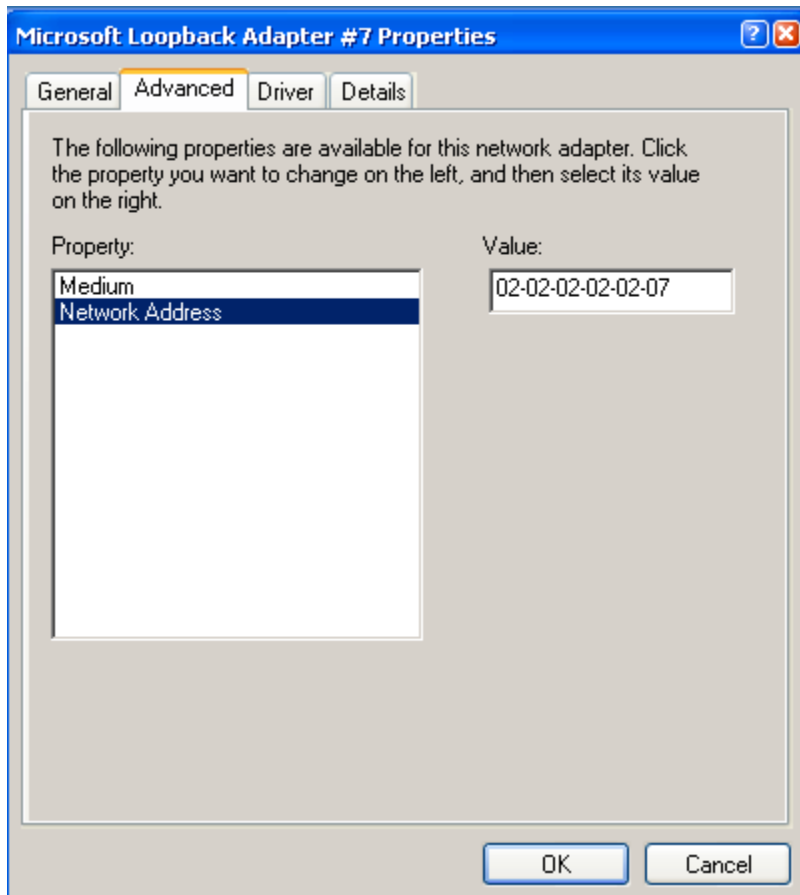


Click "next" and finish up the installation.

Under device manager, right click the loopback adapter and go to properties.



Click configure.

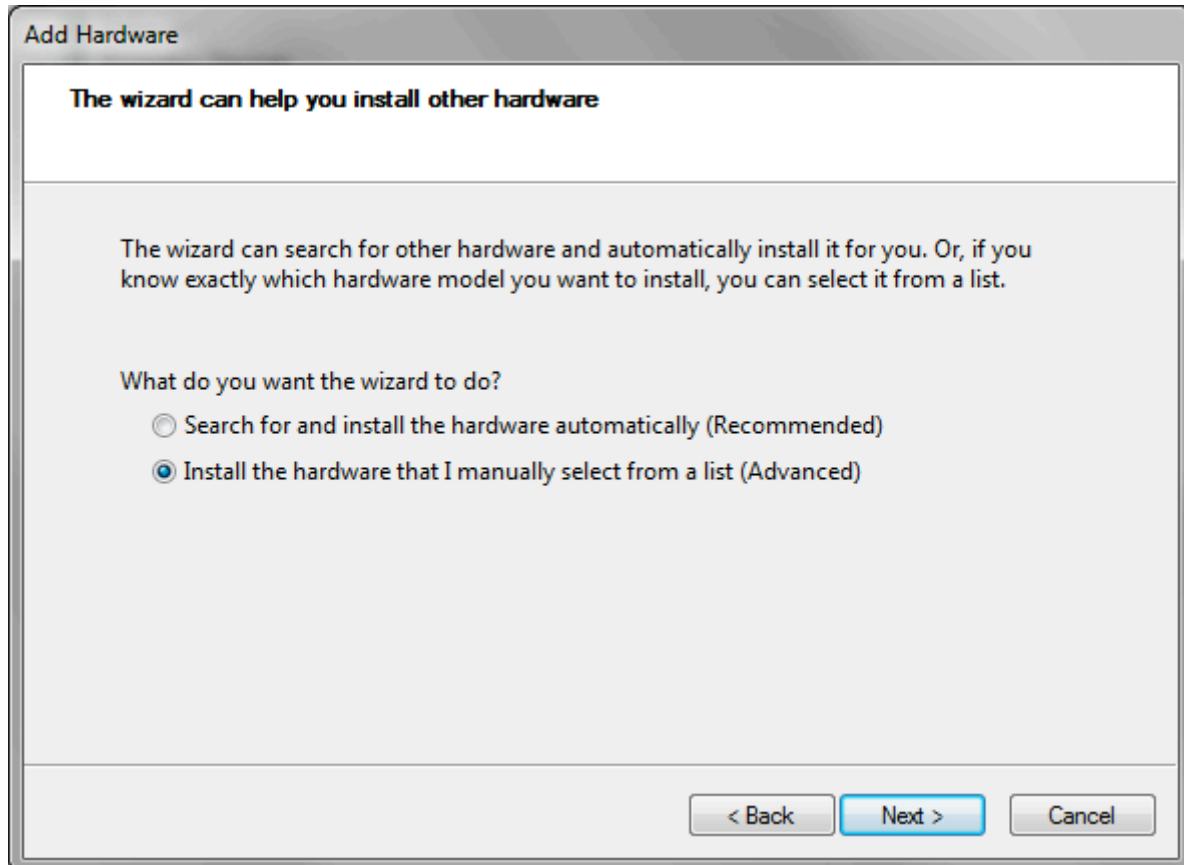


Go to the advanced tab and set the network address. The first 3 octets must be 02-02-02.

Adding loopback adapters in Windows Vista

Go to device manager. At the first item which is your computer name, right click and “Add legacy hardware”.

Follow the pictures below:












Add Hardware

From the list below, select the type of hardware you are installing

If you do not see the hardware category you want, click Show All Devices.

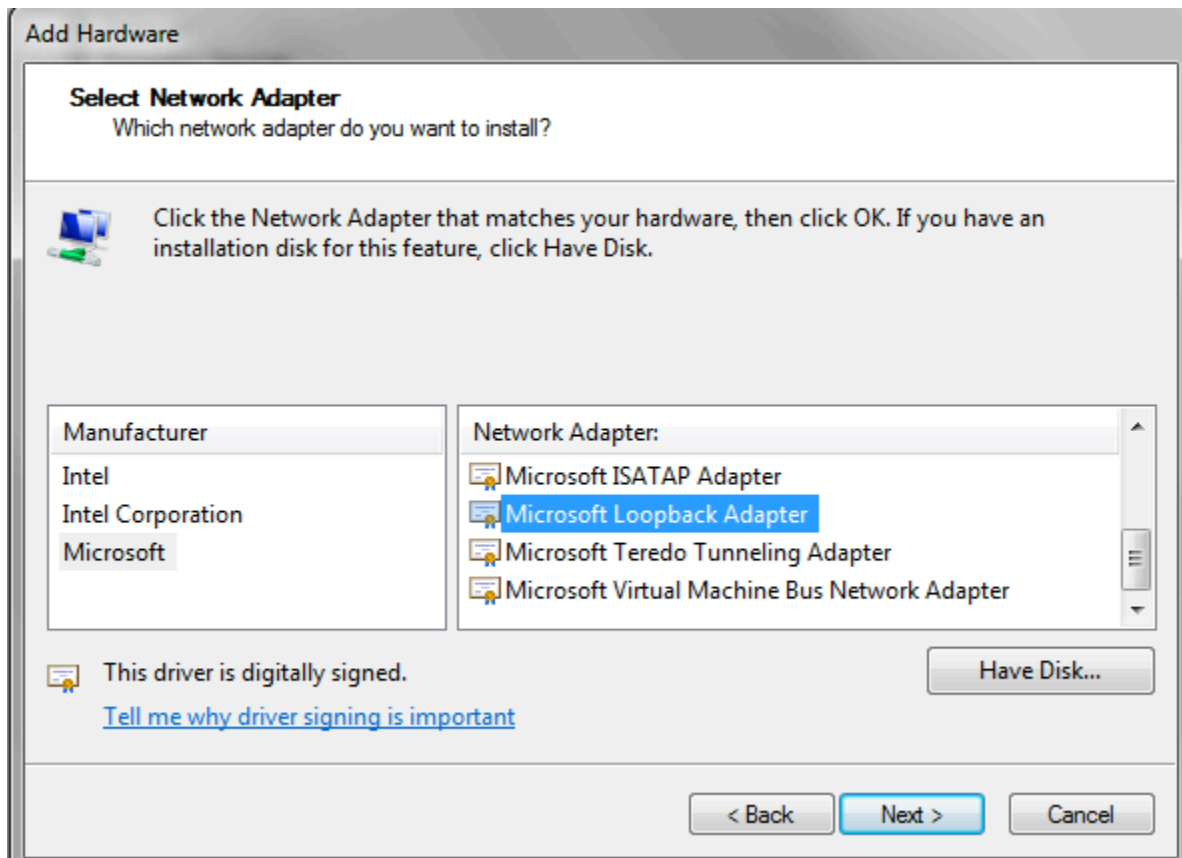
Common hardware types:

-  Multi-port serial adapters
-  Network adapters
-  PCMCIA adapters
-  Portable Devices
-  Ports (COM & LPT)
-  Printers
-  SBP2 IEEE 1394 Devices
-  SD host adapters
-  Security Devices

< Back

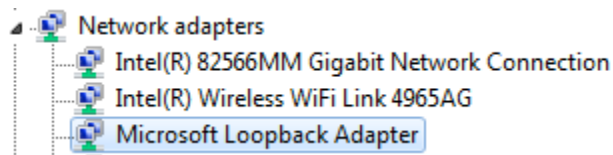
Next >

Cancel

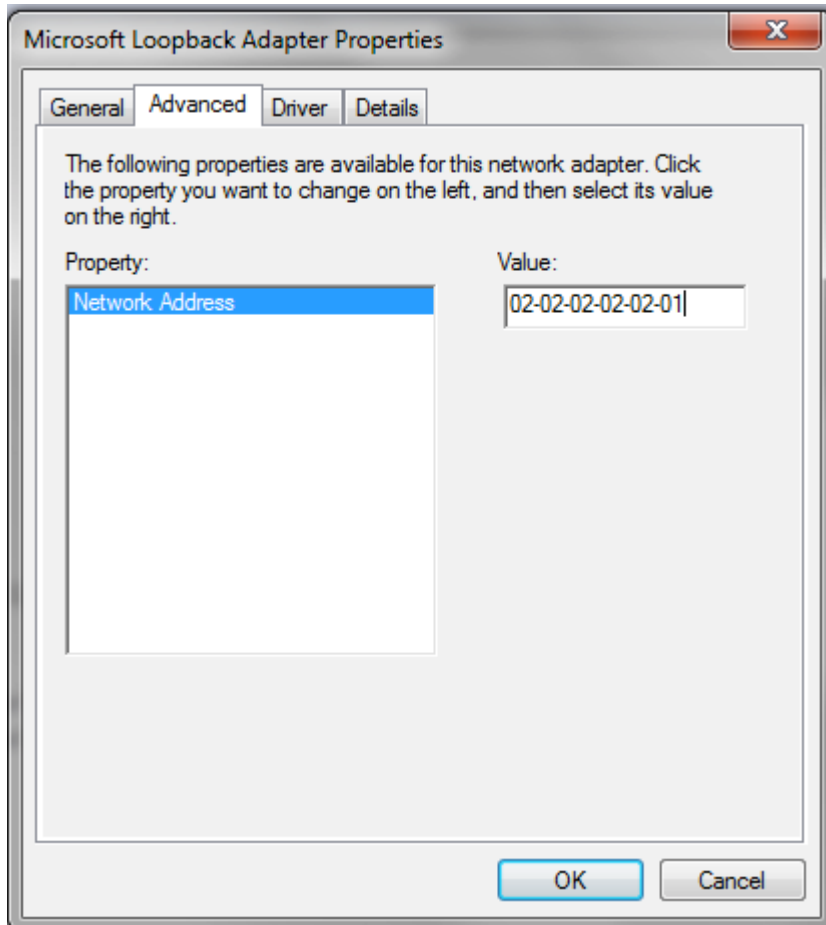


Click "next" and finish up the installation.

Under device manager, right click the adapter and go to properties.



Go to the advanced tab and set the network address. The first 3 octets must be 02-02-02.



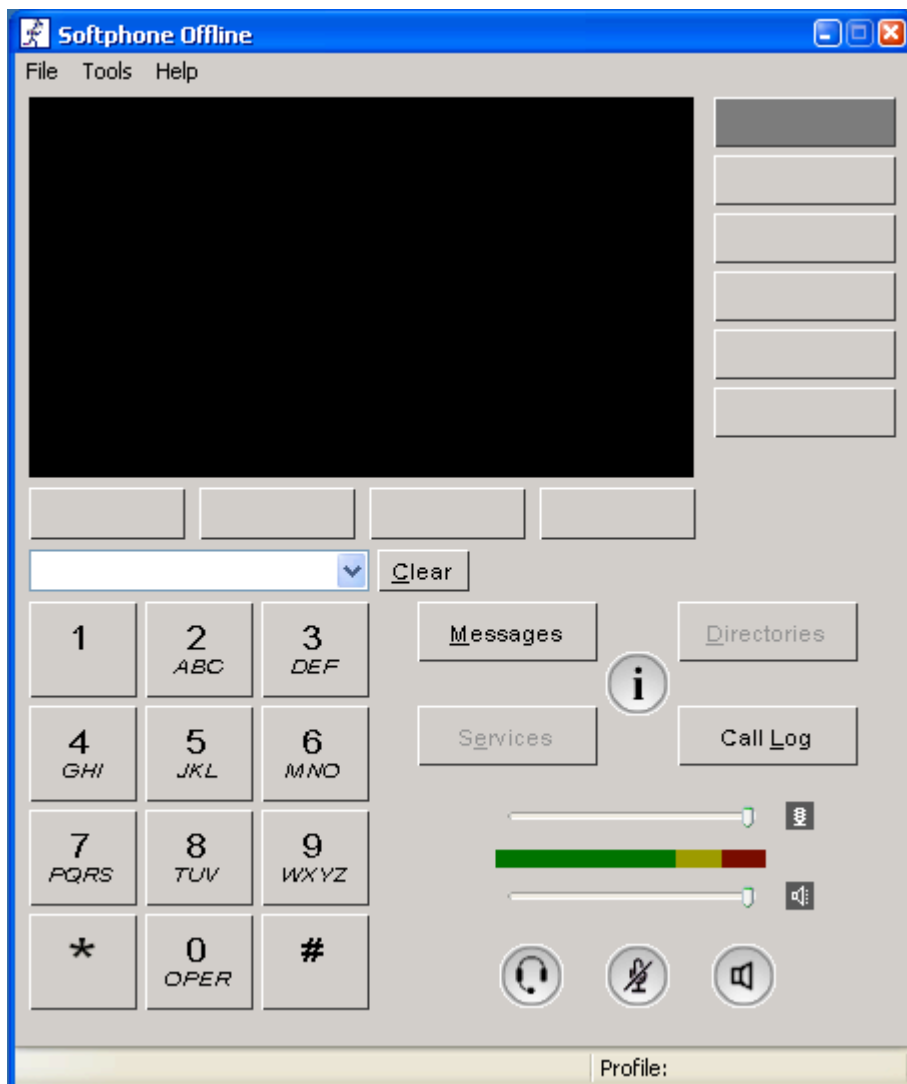
Soft phones

We will be using VTGO IP Blue client which emulates a 7960 phone by default. Based on our testing, it seems that VTGO cannot detect any interfaces if you have more than 8 network interfaces active at any time. You can disable the additional network interfaces to avoid this problem.

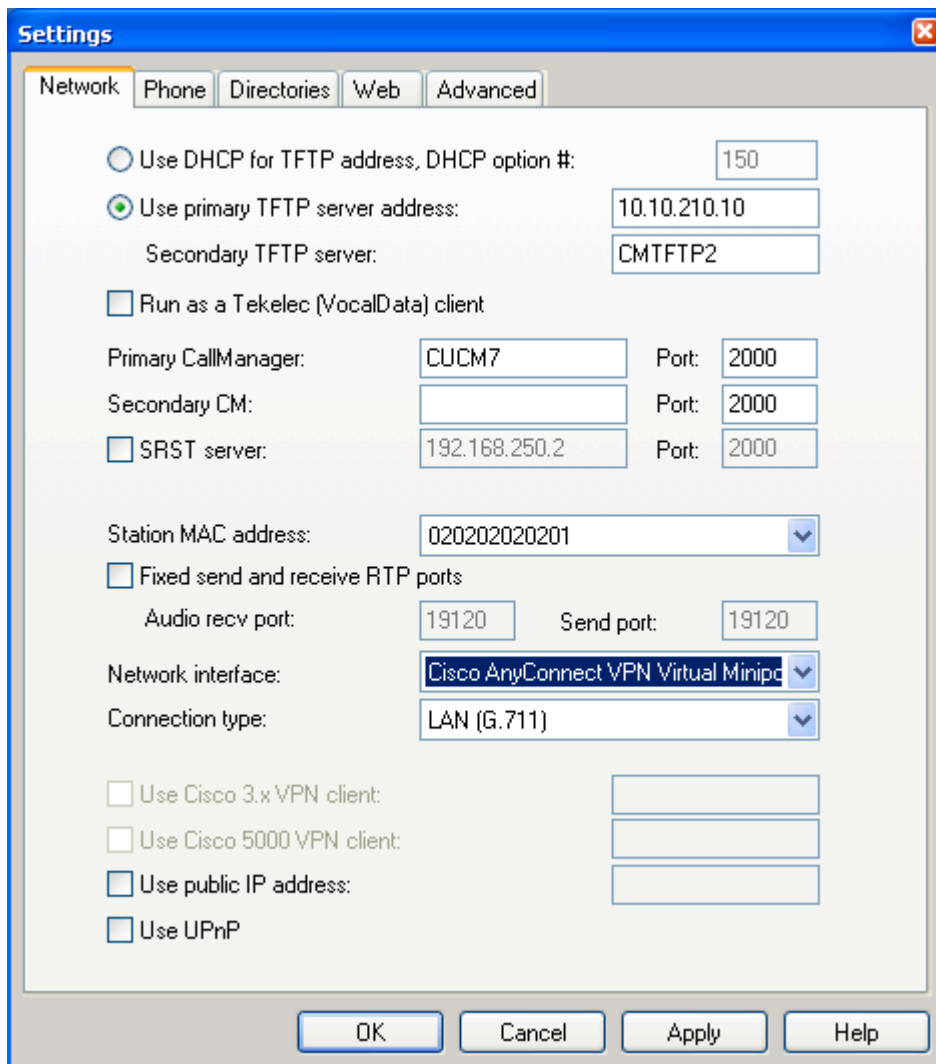
You can launch multiple instances of it by using a batch file linking to "VTGO-PC.exe" or "softphone.exe". Change the path if required.

```
start /low /min "VTGO" "c:\Program Files\IP blue\VTGO-PC\VTGO-PC.exe" /d
```

Upon launching the program, you should get:



Go to Tools -> Settings.



Configure as per your requirements. Remember to set the primary TFTP and primary callmanager IP address. The station MAC address has to be unique for every Communication Manager and network interface has to be the Cisco VPN interface (not the AnyConnect as shown above).

You can save your profile by going to "File -> Save Profile" so you can load your profile the next time you use the rack.