

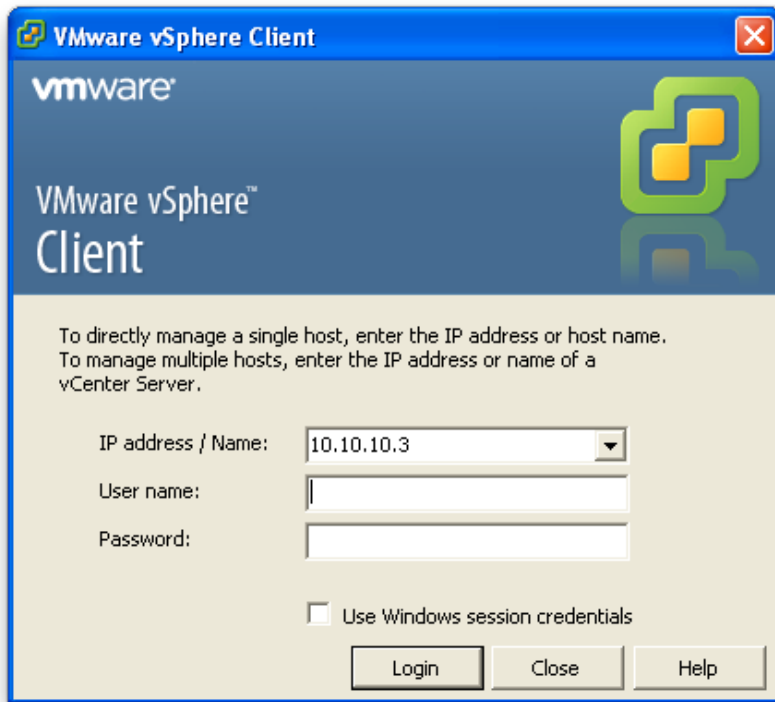


Controlling the Virtual Machines

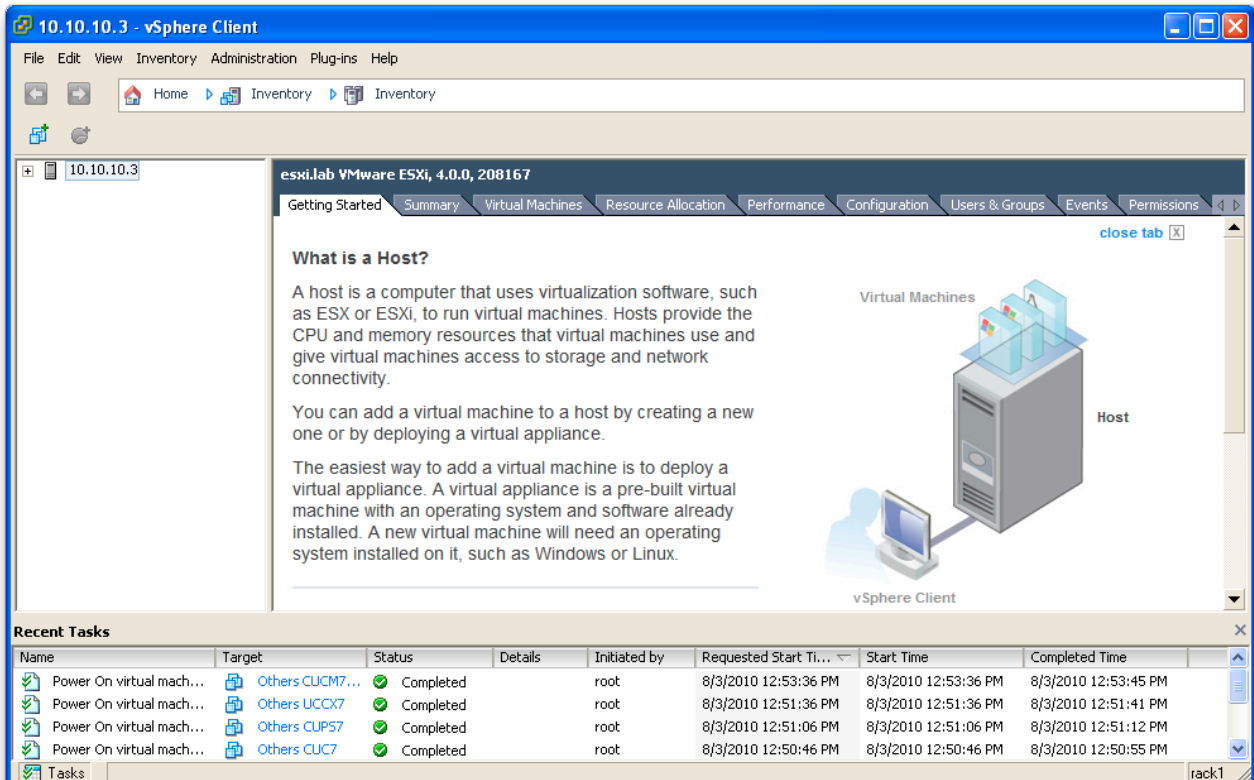
Updated: 3rd August 2010

Note: All information such as IPs and passwords will be given in the rack access page.

Download the VMware vSphere client from our website or from VMware. Install and launch the client.



Enter the username and password provided. After you've logged in, you will get the screen below:



In the actual rack rental, the VMs based on the topology you requested will be powered on.

Select the VM you wish to power on/power off/revert to snapshot. Revert to snapshot will put the VM back to its original state.

10.10.10.3 - vSphere Client

File Edit View Inventory Administration Plug-ins Help

Home Inventory

Others

Getting Started Summary Resource Allocation Performance Events Console Permissions

close tab X

What is a Virtual Machine?

A virtual machine is a software computer that, like a physical computer, runs an operating system and applications. An operating system installed on a virtual machine is called a guest operating system.

Because every virtual machine is an isolated computing environment, you can use virtual machines as desktop or workstation environments, as testing environments, or to consolidate server applications.

Virtual machines run on hosts. The same host can run many virtual machines.

Virtual Machines

Host

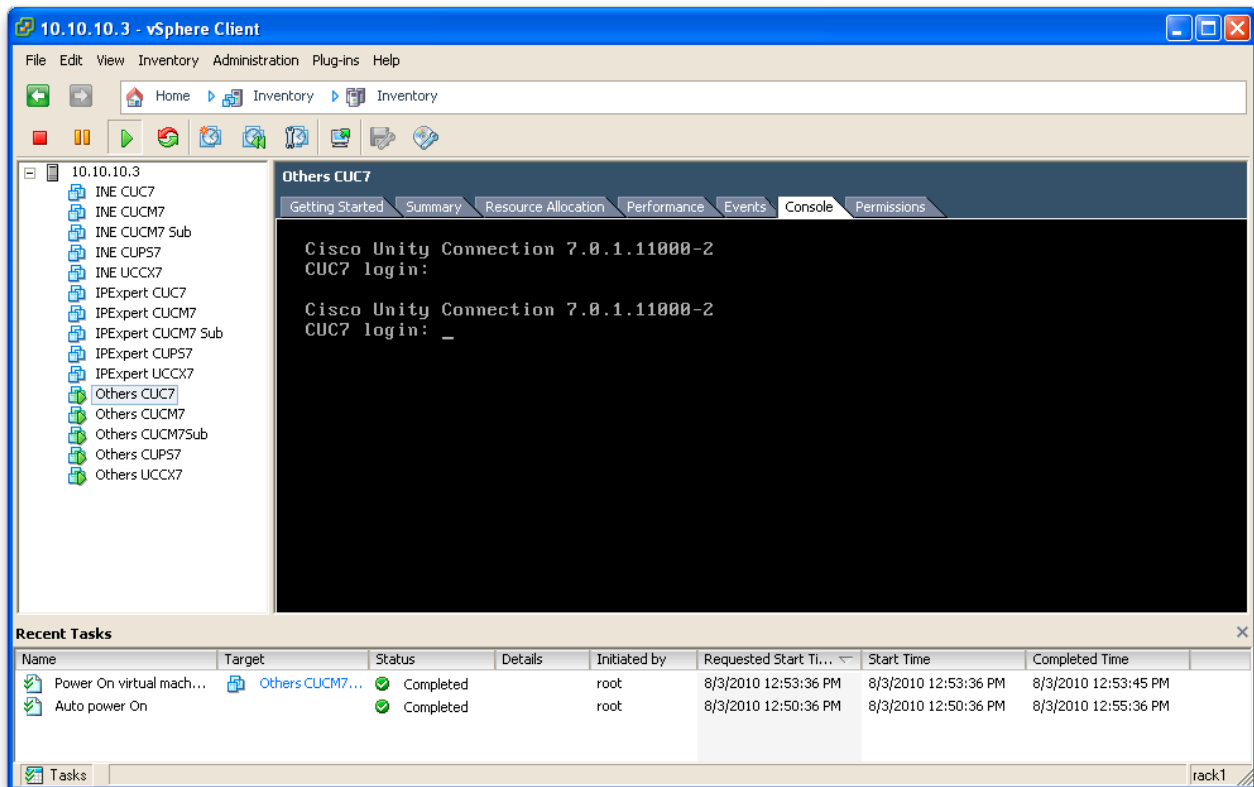
vSphere Client

Recent Tasks

Name	Target	Status	Details	Initiated by	Requested Start Time	Start Time	Completed Time
Power On virtual mach...	Others CUCM7...	Completed		root	8/3/2010 12:53:36 PM	8/3/2010 12:53:36 PM	8/3/2010 12:53:45 PM
Power On virtual mach...	Others UCCX7	Completed		root	8/3/2010 12:51:36 PM	8/3/2010 12:51:36 PM	8/3/2010 12:51:41 PM
Power On virtual mach...	Others CUP57	Completed		root	8/3/2010 12:51:06 PM	8/3/2010 12:51:06 PM	8/3/2010 12:51:12 PM
Power On virtual mach...	Others CUC7	Completed		root	8/3/2010 12:50:46 PM	8/3/2010 12:50:46 PM	8/3/2010 12:50:55 PM

Tasks rack1

To access the VMs, you can use the console in the vSphere client or RDP for UCCX.



It is recommended to remote desktop (RDP) into the UCCX machine for better performance.

For the Linux machines, you will get a black box. You can click inside the box and press enter. Press ctrl and alt together to release the cursor from the virtual machine and return the cursor back to your machine.